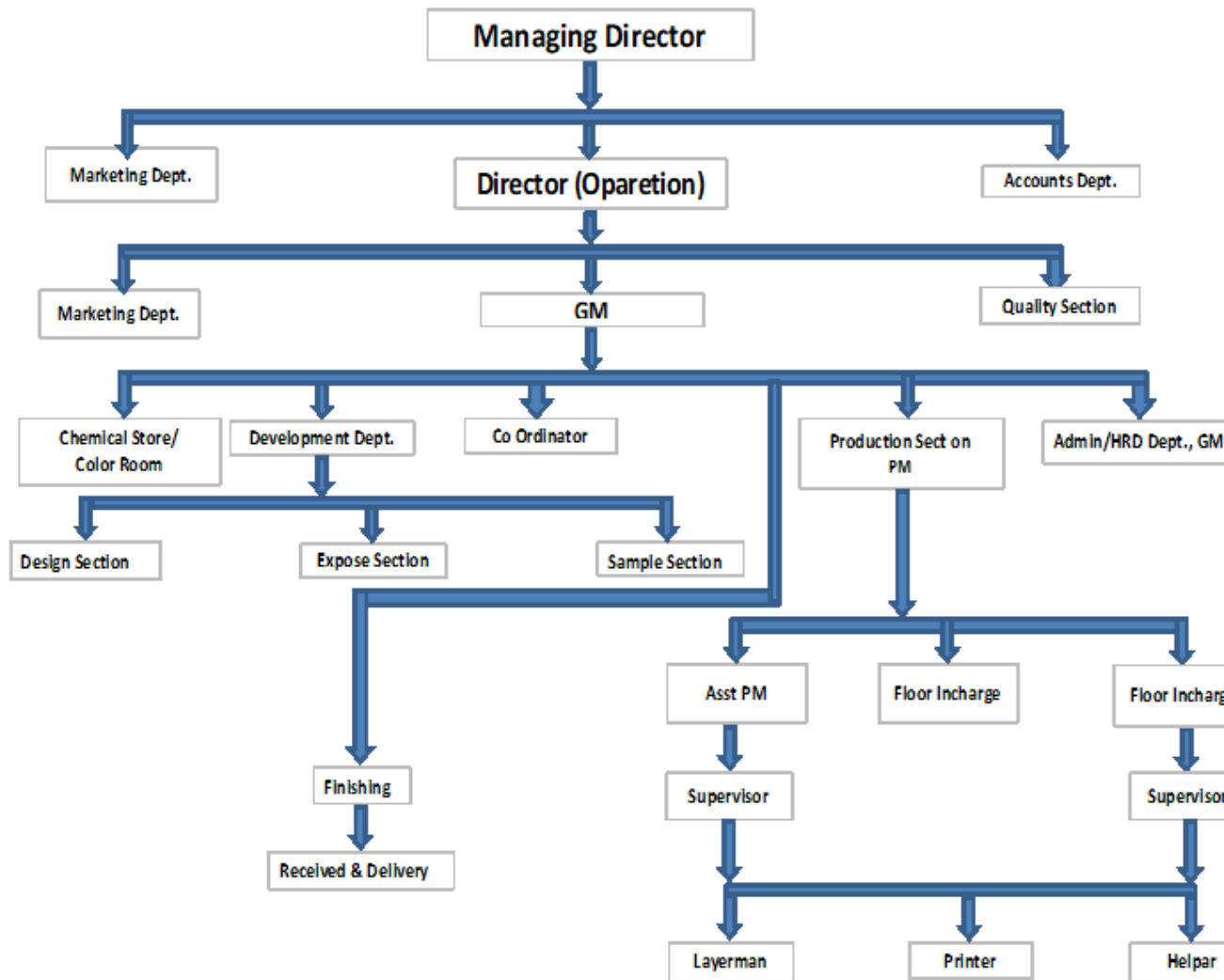


# COMPANY PROFILE



## Organogram of the company



Name	<b>SHIKDER EMBROIDERY</b> <b>100% EXPORT ORINTED APPERAL EMBROIDERY INDUSTRIES</b>
Address	
Telephone	8801915095744
Fax	880-2-9003503
E-Mail	<a href="mailto:ranaworldexport@gmail.com">ranaworldexport@gmail.com</a>
Type of project	
Capability of embroidery items	<i>01. Normal Embroidery</i> <i>Applique Embroidery (Dice &amp; Lesser Cut)</i> <i>Sequence Embroidery</i> <i>Ary /Tary / Towel/Chenel /</i> <i>Chain Stitch Embroidery</i>
Number of Employees	350 Persons.
Contact Person	<b>Md.Shohel Rana (Director Operation)</b>  Mobile : 8801915-095744
Bank	NRB Commercial bank Ltd Harirampur Branch, Shohel market (1 <sup>st</sup> floor) Khalpar, Uttara Dhaka -1230 A/c No: 013333300000496 Swift : NRBBDDH

**\*\* Working Space: 12000**

### **INTRODUCTION :**

*is a private printing project established in Bangladesh since January 2008. BM Printex is an oriented garmentsEmbroidery project.*

*In Bangladesh, there is a limited scope to maintain quality & commitment in printing & Embroidery industry, but BM PRINTEX believes good management, well stuffing, good quality & commitments which will provide a good printing industry. BM PRINTEX is now ready to start its professional printing & embroidery activities in garments sector of the country & abroad.*

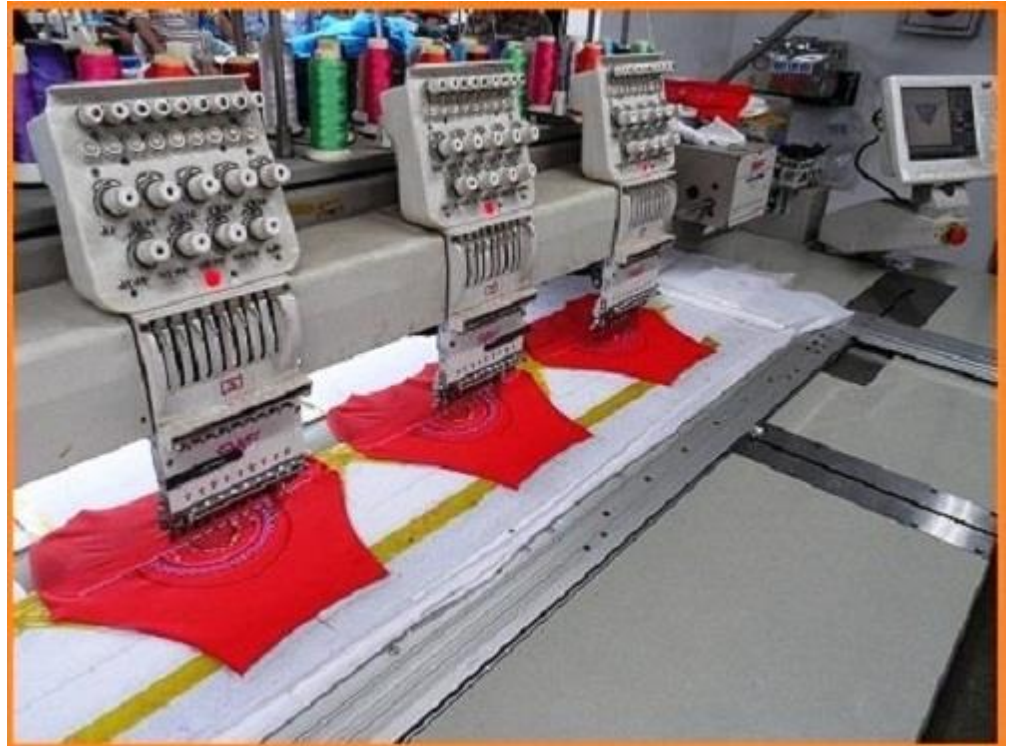
## **OUR STRENGTHS :**

- \* *Strong Determination*
- \* *Innovative and Self Starter*
- \* *Reasonable Client Base*
- \* *Team Sprit*
- \* *Result Oriented Service*
- \* *Personalized Service and Wide Network*

-

<i>SL</i>	<i>Designation</i>	<i>QTY</i>
01	<i>P. M</i>	01
02	<i>Accountant</i>	01
03	<i>Admin Manager</i>	01
04	<i>Marketing</i>	02
05	<i>Designer</i>	01
06	<i>Supervisor</i>	02
07	<i>Sample Man</i>	02
08	<i>Operator</i>	12
09	<i>Asst .Operator</i>	12
10	<i>QC</i>	05
11	<i>Q.I</i>	05
12	<i>Helper</i>	16
13	<i>Electrician</i>	01
14	<i>Cleaner</i>	02
15	<i>Security Guard</i>	02
<b>Total =</b>		<b>65</b>

## Embroidery Section





### **Our Quality Control**

You may try us even on brand quality products since we never compromise on quality. Our inspection team and system can ensure the standard with step-to-step serious control from Fabrics, Pattern/Cutting, Sewing, Finishing, and Packing through skilled and experienced Merchandiser quality controllers and inspectors.

## **Our Sampling Section**

We have also our own sampling workshop equipped with enough newest equipment's and machinery's to give the best service in Sampling requirements. It is well organized by very much experienced manpower. We can provide through our sampling Section department most kinds of garments in woven & knited fabric's and yarns.

### **List of Machineries:**

#### *Machinery List :*

<b>SL</b>	<b>Machinery Name</b>	<b>Quantity /Pcs</b>
01	Printing Glass Table	10 Pcs (80 ft per Table)
02	Sample Table (Glass)	1
03	Dryer Machine	80
04	Hit press Machine	4
05	Bell Curing (Eclectic)	1
06	Bell Curing (Gas) (MNR USA Brand)	1
07	Flock Machine	5
08	Thinner Gun	8
09	Compressor Machine	8
10	Spouse Camera	2
11	Color Mixture Machine	2
12	Screen Binding Machine	1
13	Water Pump	1

14	Generator	2
15	Frame	4000 pcs
16	Computer	9
17	Printer	3
18	Scanner	2
19	Tube Light	800
20	Fan	10

**Machinery List (Embroidery Unit) :**

<b>SL</b>	<b>Machinery Name</b>	<b>Quantity /Set</b>
01	MG (S ) 920/730 9 CLR	02 ( MADE IN KOREA ) 20 HEAD X3=60 HEAD
02	RNP ( SEQUINS ) 6 CLR	03 ( MADE IN CHINA )

**Production Capacity off Embroidery Section :**

<b>ITEM OF EMBROIDERY</b>	<b>COLOR</b>	<b>QTY IN PCS</b>
NORMAL EMBROIDERY	1-6	10000/day
APPLIQUE EMBROIDERY	1-2	5000-6000/day
SEQUINS EMBROIDERY	One	6000-7000/day



**LIST OF OUR EXISTING CUSTOMERS :**

<b>NAME OF BUYERS OF FACTORY</b>	<b>BUYING AGENT</b>	<b>NAME</b>
01. LIDL KNIT wear LTD		IFS
02. Bossini kinitex		reedisha
03. lpp planet		blue
04. auchan apparels ltd.		lantabur
05. verbaudet textile ltd		orion knit
02. PIZZA	TARATEX FASHION	
03. LG	LITHE GROUP	
04. CHAMPON	MASCOM COMPOSITE	
05. PIAZZA ITALIA GARMENTS		REDIX
06. KMART Manami Fashion LTD.		
07. KIK FASHION ltd.		RIZVI
08. ALDI FASHION ltd.		RIZVI
09. LOTTO		

TARATEX FASHION LTD.

10. Smart Stitch  
apparel ltd.

Index

11. CELIO  
GOLDTEX GARMENTS

CELIO SOURCING BD.

12. DISNEY/SNOOPY  
DALLAS COMPOSITE

BOSTON SPORTSWEAR

13. DR. REHFELD  
RADIENCE GROUP

GRANVILLE (HK)

14. PULL & BEAR  
SOUTHERN KNITWEAR

PADMA LTD

15. MISTER & LADY  
CORPORATION

CHERRY FIELD

KIMS

16. C & A  
SOUTHERN KMITWEAR

MILES

17. KAPPA  
REEDISHA GROUP

18. BRASKA  
REEDISHA GROUP

-

*Other's Things :*

Fire Extinguisher : 08 pcs

First Aids : Available

Pure Drinking Water : Available

Toilet Facility : Available

Working Hour : 8 am to 5 pm (some times done over time maximum 2 hours for emergency shipment)

Holydays : Given weekly & public holidays.

Maternity & other benefits : Exist.

Emergency Exit : 8 Gate

Generator Facility : Available

Vehicle Facility : Available

**WORKER EXITE: 02. (FRONT & BACK)**

**BSCI UNDER PROCESS.**

**GET APPROVAL SOON.**

OFFICE ROOM







