

BINIMOY TEXTILE MILLS.

100% EXPORT ORIENTED KNIT INDUSTRY

Company profile of Binimoy Textile Mills.



BINIMOY TEXTILE MILLS.

100% EXPORT ORIENTED KNIT INDUSTRY

Corporate View Point:

Binimoy Textile Mills is one of the most successful textile manufacturers in Bangladesh; a country with great potential in the field of textile manufacturing. We provide the highest value products and services possible to our customers. We seek to foster long term relationships with our business partners and provide industry leading benefits and opportunities to our employees. Being one of the front-line clothing suppliers in **RMG** sector in Bangladesh. We assure the perfect blend of quality and efficiency. To extend its position as a world-class manufacturer, we strive to achieve global standards in quality, cost, service and scale of operation. We are focused on using innovative processes, technologies & machines to manufacture the finest products at a reasonable cost. **BINIMOY TEXTILE MILLS** has expanded its capacity, developed a skilled workforce and introduced integrated technologies, to remain globally up-to-date. It is truly an organization with a glorious past and a bright future.

Our Mission:

Our mission is to contribute to the greater interest of the people broadly speaking to serve the nation. To satisfy our stated business goal, we ensure Laws and workplace regulations. It is our motto to prioritize the academic qualification and technical expertise to bring the organizational success irrespective of cast, creed color & race.

Our Vision:

Our corporate vision is to create an outstanding value for customers and other stakeholders. We are committed to produce world class products through our hard labour which can satisfy our customers.

BINIMOY TEXTILE MILLS.

100% EXPORT ORIENTED KNIT INDUSTRY

Message from Management:

Greeting from **BINIMOY TEXTILE MILLS**. **BINIMOY TEXTILE MILLS** is one of the renowned sources for topmost overseas buyers to purchase high quality garments from Bangladesh. We have the total workforce over 800 and hi-tech mechanized production facility in our factory premises. We have the production volume of **Basic T-shirt : 18,000 pcs per day, Polo shirt : 6,000 pcs per day, Others : 4,000** pcs per day pieces & Yearly turnovers is 4 million USD. We do not compromise with the quality of the product and we also make sure that shipment is on-time; this is how we have been capable to exert very positive bi-lateral business relationship with the international purchasers. In order to lead our business proficiently, we do follow certain ethics which are considered to be crucial for organizational success and continuous development.

We also make sure that, all of our employees are having safe workplace with positive atmosphere. Consequently, having said that, we are committed to play a vital role in order to create the opportunity of employment for the people of my country, which can assist us reaching very close to achieve our national dream as well as to cope up with the millennium development goal.

Journey for Excellence:

BINIMOY TEXTILE MILLS started its journey in 1985 – as garments manufacturers under the leadership of its experienced entrepreneurs, aiming to become the trendsetter it is today. We have started from 1985, operation start on our own building at **43 NO. KABI JASHIMUDDIN ROAD (ZINU MARKET), PAGAR, TONGI BISIC, GAZIPUR, Bangladesh.**

Quality Control Assurance:

"We believe in Excellence & Quality"

As our business motto is *"We believe in Excellence & Quality"*, we want to ensure 100 % customer satisfaction by producing qualitative products and ensuring top class service. We always prioritize customers' requirement and their expectation. Through our hard work and innovative approach, we are always dedicated to meet customers' demands which can copy up with the flow of modern era.

BINIMOY TEXTILE MILLS.

100% EXPORT ORIENTED KNIT INDUSTRY

Company at a glance:

Company Name	: Binimoy Textile Mills.
Type of business	: Manufacturer and Exporter.
Legal status	: Private Limited Company
Year of Establishment	: 1988
Owner	: Md. Iman Uddin (Chairman)
Factory	: 43 NO. KABI JASHIMUDDIN ROAD(ZINU MARKET), PAGAR, TONGI BISIC, GAZIPUR, Bangladesh.
Bank Details	:
BRANCH, GAZIPUR,	:
Yearly Turnover	:
Total Manpower	: 900
Our major customers	: Texebo, Best & Less, Sriments, Jeltex, VONCGroup, OP, Lonsdale, Holland, Mana, Roly, Biz Collection, Gate, Sweet Year, HFG, Piccollo, Tiffosi, Incotone.
Total land area	: 12,500 sft
Per floor	: 8,900 sft
Total area (Fire License)	: 50,000 sft (including Generator, Boiler & security rest room)
Production capacity	: 6,72,000 pcs/month
Boiler-1 pcs	: 150 KG V 1-phases 50 Hz
Generator (Diesel) -1 pcs	: 150 KVA,
DESCO (Electricity)	: 160 KW ,
Transformer	: 200 KVA

BINIMOY TEXTILE MILLS.

100% EXPORT ORIENTED KNIT INDUSTRY

Facility that we offered our customers:

- We ensure HR & Compliance standard followed by customer's requirement, local labor laws & ILO.
- We have sample producing facilities with modern software system.
- We have our own lab section with modern machineries. Office/conference room facilities.
- Goods inspection room facilities for buying quality controller.

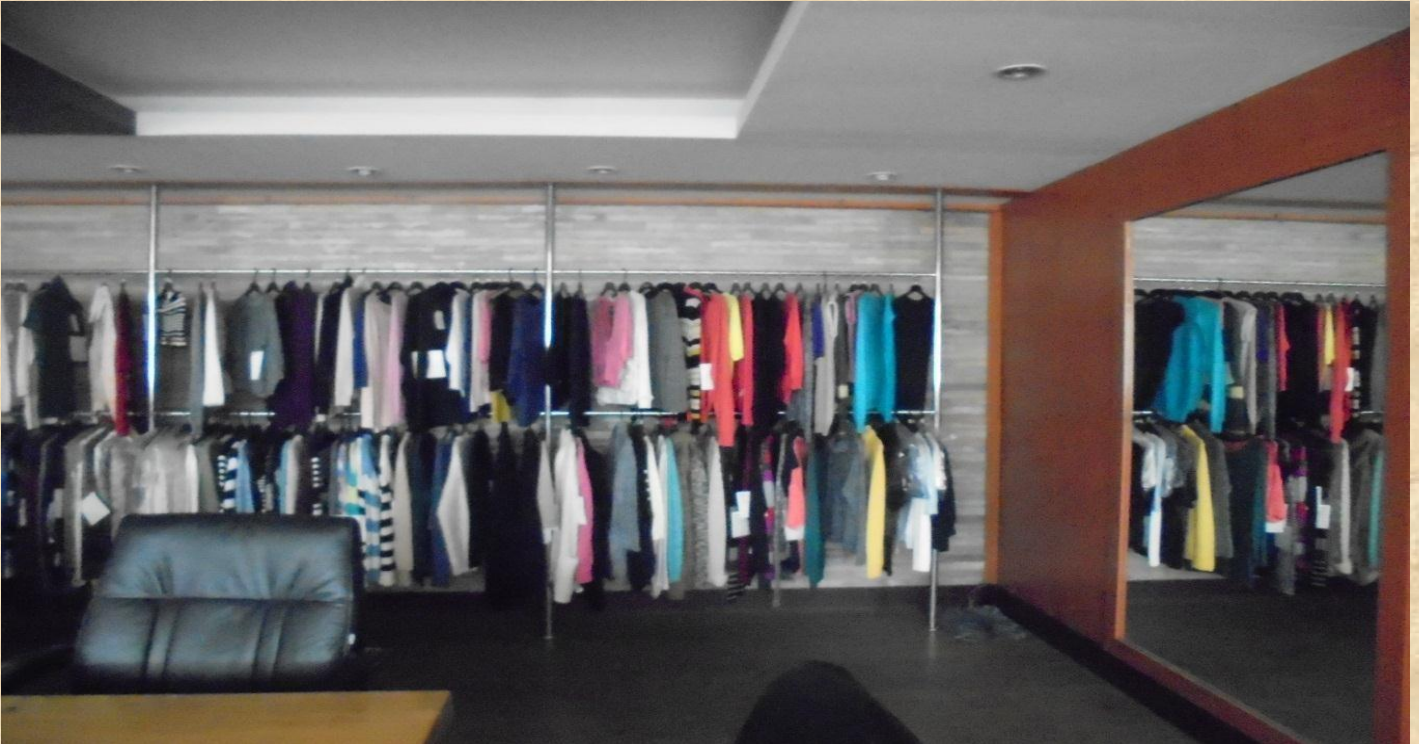
Facility that we offer for our employees:

- We ensure a safe & pleasant workplace for each & every individuals.
- Separate prayer room facilities for men & women.
- Dining room along with pure drinking water facilities.
- Medical & health services led by one medical officers (MBBS doctors).
- Medical room with necessity facilities & highly experienced nurse.
- Addressable fire detection system is in place.
- No child labours/ force labour.
- Fire drill practice (monthly).
- Salary standard as per Bangladesh labor law.
- Child care room & top class facilities.
- Maternity leave & benefit.
- Festival bonus 2 (yearly).

BINIMOY TEXTILE MILLS.

100% EXPORT ORIENTED KNIT INDUSTRY

[Our Product Gallery:](#)



BINIMOY TEXTILE MILLS.

100% EXPORT ORIENTED KNIT INDUSTRY



Cutting Section



Printing Section



Sewing Section



Pressing Section

BINIMOY TEXTILE MILLS.

100% EXPORT ORIENTED KNIT INDUSTRY



Finishing Section



Knitting Section

BINIMOY TEXTILE MILLS.

100% EXPORT ORIENTED KNIT INDUSTRY

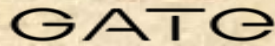
Machinery List:

SL	Item Name	Brand Name	Qty
01	Plain Machine	Brothers/Pegasus	160
02	Bar Tack Machine	Brothers/Pegasus	2
03	Button Hole	Brothers/Pegasus	3
04	Button Stitch	Brothers/Pegasus	2
05	Kansai 2-Needle	Brothers/Pegasus	2
06	Rib Cutting	Brothers/Pegasus	2
07	Cutting	Brothers/Pegasus	6
08	Fusing Cutting	Brothers/Pegasus	1
09	Sakar Machine	Brothers/Pegasus	1
10	Fabric Inspection	Brothers/Pegasus	1
11	Snap Button Machine	Brothers/Pegasus	10
12	Overlock Machine	Brothers/Pegasus	115
13	Flatlock Machine	Brothers/Pegasus	62
14	Feed Of the arm M/C	Brothers/Pegasus	2
15	Thread Cone Machine	Brothers/Pegasus	1
16	Iron		24
17	Iron Table		24
18	Heat C		4
TOTAL			422

BINIMOY TEXTILE MILLS.

100% EXPORT ORIENTED KNIT INDUSTRY

Buyers:



Contact details:

Md.Shohel Rana
CEO

Mob : 01915095744
E-mail : ranaworldexport@gmail.com

Saidul Islam Shajib
Director

Mob : 01714670895
E-mail :

Mostafizur Rahman
(Sobuj)

Manager (Merchandising)

Mob: 01787703014

Thanks a lot for going through our profile. We would love to welcome you at our business park at your best convenient time.

Thanking You
Authority
Binimoy Textile Mills.